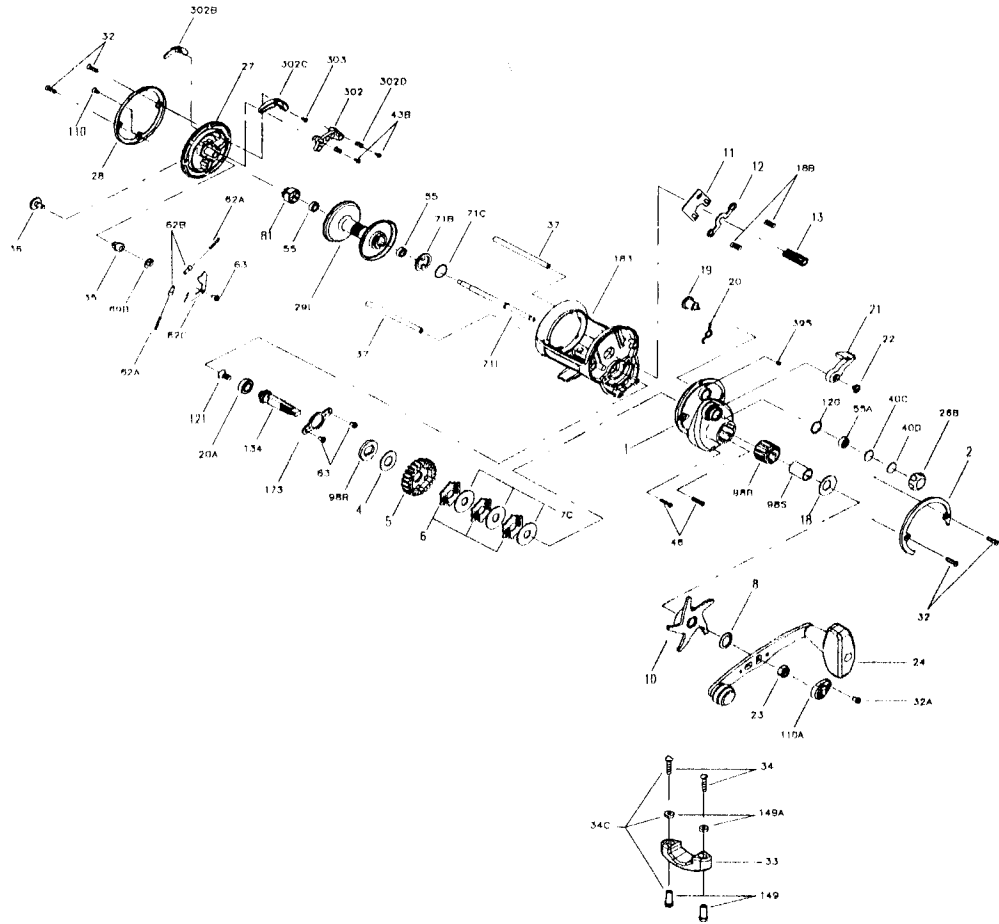




PARTS AND PRICE LIST FOR MODEL 525MAG



Key No.	Part No.	Description	Price	Key No.	Part No.	Description	Price
1	001 525MAG	Right Side Plate	\$6.25	39S	039S965	Right Side Plate Screw	\$.40
2	002 525MAG	Right Side Ring	4.00	40C	040C555	Metal Thrust Washer	.40
4	004 060	Fibre Washer	.45	40D	040D555	Rubber Thrust Washer	.40
5	005 525MAG	Main Gear	6.50	46	046 4300	Side Plate Screw (2 req.)	.50
6	006 525MAG	Friction Drag Washer (3 req.)	1.30	55	055 965	R.S. Spool Ball Bearing (2 req.)	7.00
7	086 049L	Metal Drag Washer (3 req.)	.90	55A	055 113H	Ball Bearing	9.00
8	008 060	Tension Spring Washer	.50	62A	014 040	Click Spring (2 req.)	.60
10	010 525	Star Drag	5.25	62B	062B525MAG	Click Pin (2 req.)	.65
11	011 525	Eccentric Jack	1.25	62C	062C525	Click Spring Cover	.75
12	012 555	Pinion Yoke	1.15	63	063 500S	Retaining Screw (3 req.)	.80
13	013 525MAG	Pinion Gear	5.00	69B	069B600	Retaining Ring	.90
18	018 505	Tension Spring Washer	.95	71B	071B525MAG	Clutch Plate	2.25
18B	018 525	Clutch Spring (2 req.)	.90	71C	071C525MAG	Clutch Plate Retainer	1.50
19	019 525	Eccentric	1.80	71L	071L525MAG	Spool Spindle	5.50
20	020 525	Eccentric Spring	.45	81	081 525	Click Ratchet	1.25
20A	020 722	Ball Bearing	12.00	98B	098B525	Anti-Reverse Bearing	10.35
21	021 525	Eccentric Lever	3.15	98R	098 525	Ratchet Spacer	1.25
22	022 310	Eccentric Screw	.55	98S	098S525	Clutch Shaft	2.50
23	023 555	Handle Nut	1.15	110	110 050	Side Plate Short Screw	.50
24	024 525	Handle	8.00	110A	110A555	Handle Nut Lock Cap	.75
26B	026B555	Spool Tension Cap	1.85	120	120 113H	O-Ring	.50
27	027 525MAG	Left Side Plate	6.00	121	121 525	Bearing Screw	1.75
28	028 525MAG	Left Side Ring	4.25	134	134 525	Gear Stud	4.50
29L	029L525MAG	Aluminum	20.00	149	149 045	Rod Clamp Nut (2 req.)	1.00
32	032 310	Frame Post Screw (4 req.)	.40	149A	149 200	Rod Clamp Hex Nut (2 req.)	.50
32A	032 015	Handle Lock Screw	.40	173	173 525	Bearing Retainer	1.75
33	033 525	Rod Clamp	4.00	183	183 525MAG	Frame	15.00
34	034 045	Rod Clamp Screw (2 req.)	1.00	302	302 525MAG	Magnet Housing	4.50
34C	034C045	Rod Clamp Screws w/Nuts	2.50	302B	302B525MAG	Magnet Control Button	1.00
35	035 525	Click Tongue	1.25	302C	302C525MAG	Magnet Ramp	1.00
36	036 525	Click Button	1.50	302D	302D525MAG	Magnet Spring (2 req.)	.50
37	037 525	Frame Post (2 req.)	2.25	303	303 525MAG	Magnet Button Screw	.40